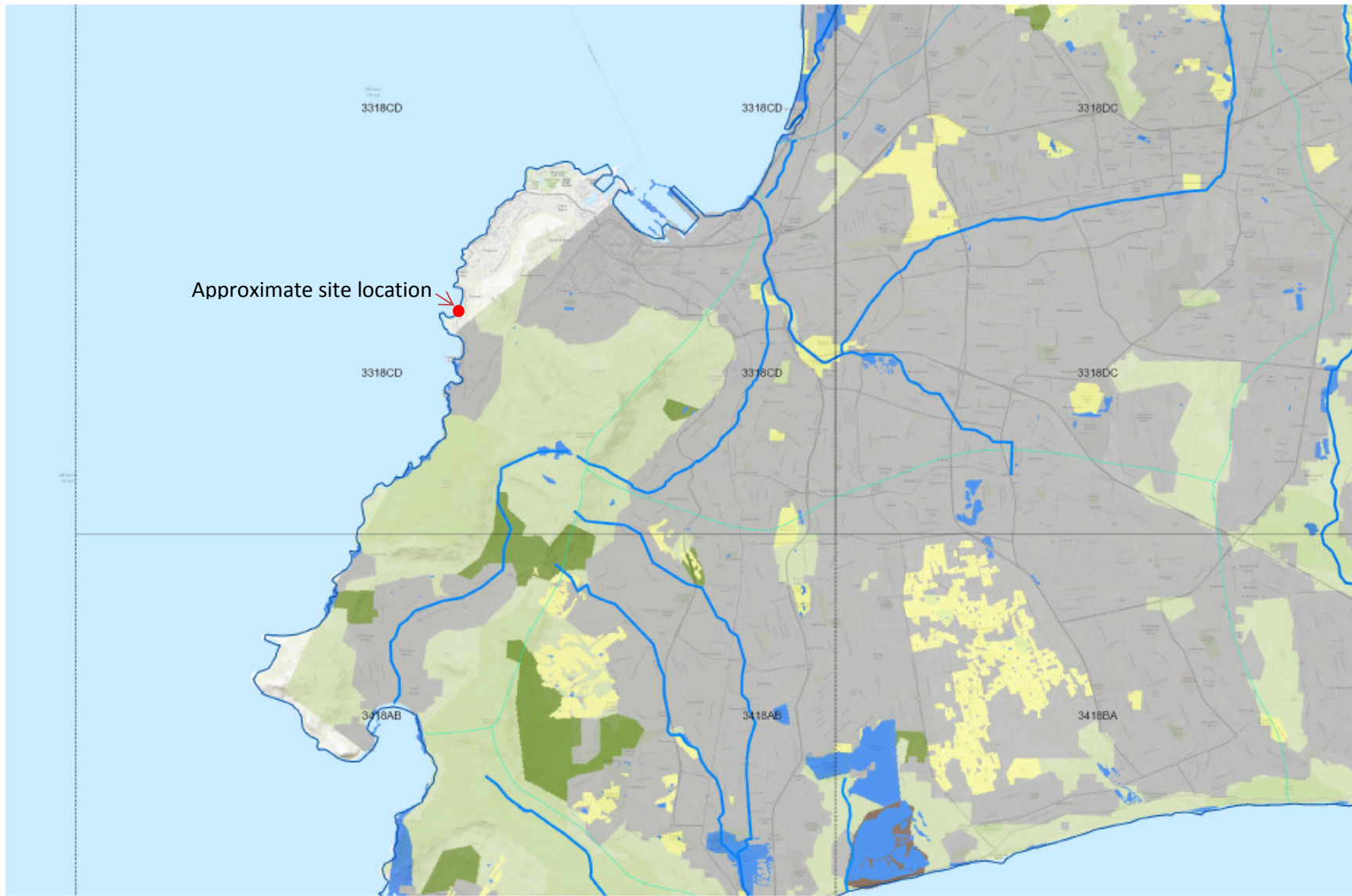


Estuaries

Description

Location of site relative to nearby estuaries

Approximate site location



Legend

- Quater-degree grid squares
- Primary river catchments
- Secondary river catchments
- Tertiary river catchments
- Quarternary river catchment
- Rivers (NFEPA)
 - 1
 - 5
 - 10
- Rivers - free flowing (NFEPA)
- Rivers - flagship (NFEPA)
- Rivers
- Flagships
- National Landcover
 - Cultivation
 - Degraded
 - Mines
 - Natural
 - Plantations
 - Urban Built-up
 - Waterbodies
- Citations

1: 144 447



7,3 0 3,67 7,3 Kilometers

WGS_1984_Web_Mercator_Auxiliary_Sphere
© Latitude Geographics Group Ltd.

This map is a user generated static output from an Internet mapping site and is for reference only. Data layers that appear on this map may or may not be accurate, current, or otherwise reliable.

THIS MAP IS NOT TO BE USED FOR NAVIGATION

