

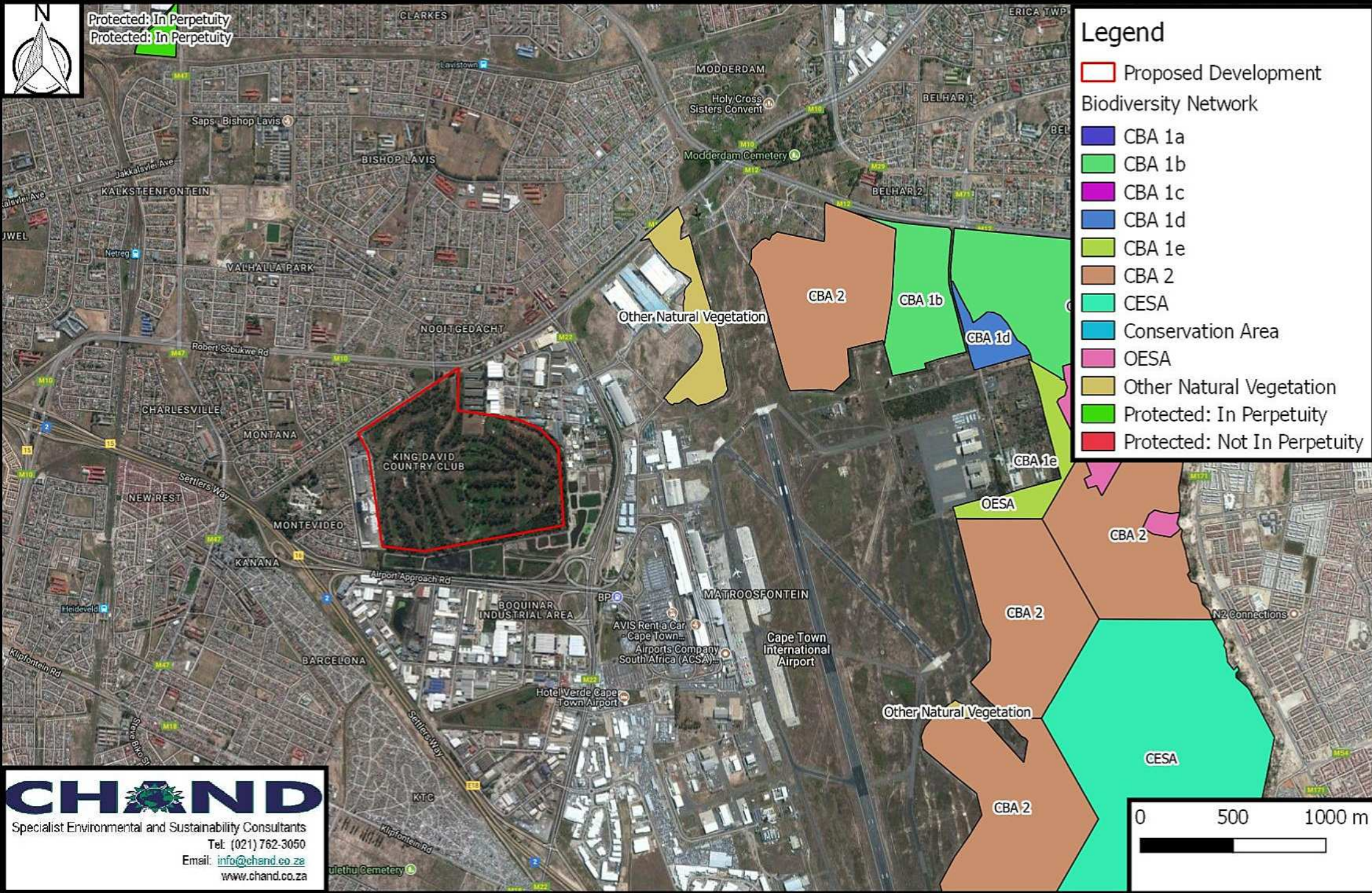
King David Industrial Park - Critical Biodiversity Areas



Protected: In Perpetuity
Protected: In Perpetuity

Legend

- Proposed Development
- Biodiversity Network**
- CBA 1a
- CBA 1b
- CBA 1c
- CBA 1d
- CBA 1e
- CBA 2
- CESA
- Conservation Area
- OESA
- Other Natural Vegetation
- Protected: In Perpetuity
- Protected: Not In Perpetuity



CHAND
Specialist Environmental and Sustainability Consultants
Tel: (021) 762-3050
Email: info@chand.co.za
www.chand.co.za

